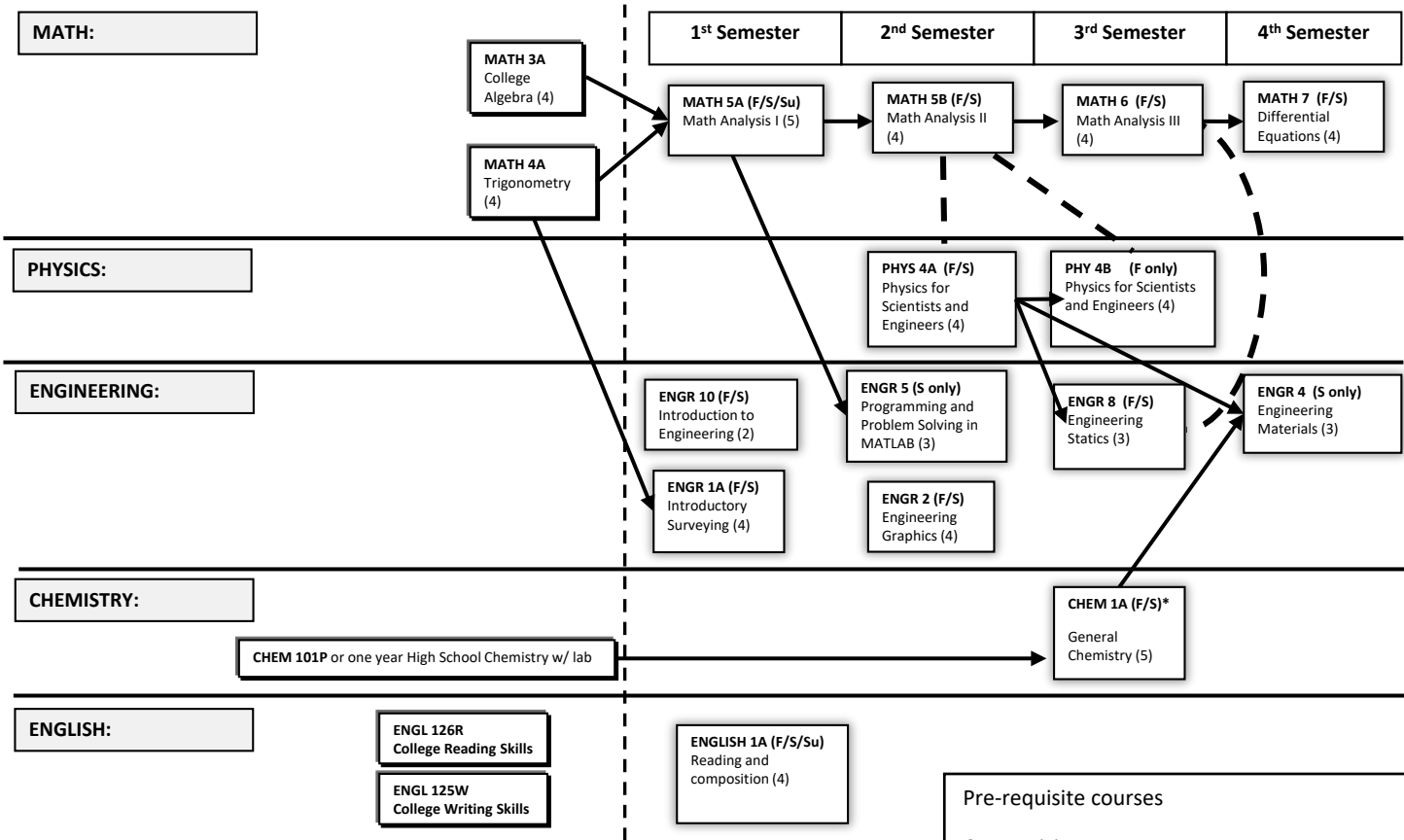




(Civil) ENGINEERING COURSE ROADMAP

**Prerequisite Courses**

**Major Courses**



Pre-requisite courses  
Co-requisite courses  
Course offerings: (F) Fall, (S) Spring, (Su) Summer  
\* CHEM 3A may be taken in place of CHEM 1A for transfer to Fresno State only, and ENGR4 omitted.

**NOTE:** Academic requirements may differ with transfer institutions. This is not a substitute for a detailed Student Education Plan.