



Fresno City College  
*California's Premier Community College*



# FCC Institutional SLOs & GE Outcomes

- ACT College Outcome Survey

Institutional Research and Planning - March 11, 2011



Fresno City College  
*California's Premier Community College*

## OUTLINE

- ACT COLLEGE OUTCOME SURVEY
  - Survey instrument
  - Sampling and response rate
  - FCC institutional student learning outcomes (SLOs)
  - FCC GE student learning outcomes (GE SLOs)



Fresno City College  
*California's Premier Community College*

## Survey Instrument

- Developed by ACT
- To assess students' perceptions of the importance of, progress toward, and college contribution to a variety of college outcomes
- College outcome survey questions are mapped to 4 FCC SLOs and 12 GE SLOs:
  - College outcomes - 26 items - mapped to FCC and GE SLO's
  - Personal growth - 36 items - mapped to FCC and GE SLO's



Fresno City College  
*California's Premier Community College*

## Sampling and Response Rate

- 50 upper level classes were selected to include more students nearing completion of their course work.
- Survey packets were sent to faculty and surveys were administered by faculty
- 49 classes returned the survey and 888 students completed survey
- Same survey was also conducted in spring 2004 (808 responses) and spring 2008 (868 responses) and results were compared



Fresno City College  
*California's Premier Community College*

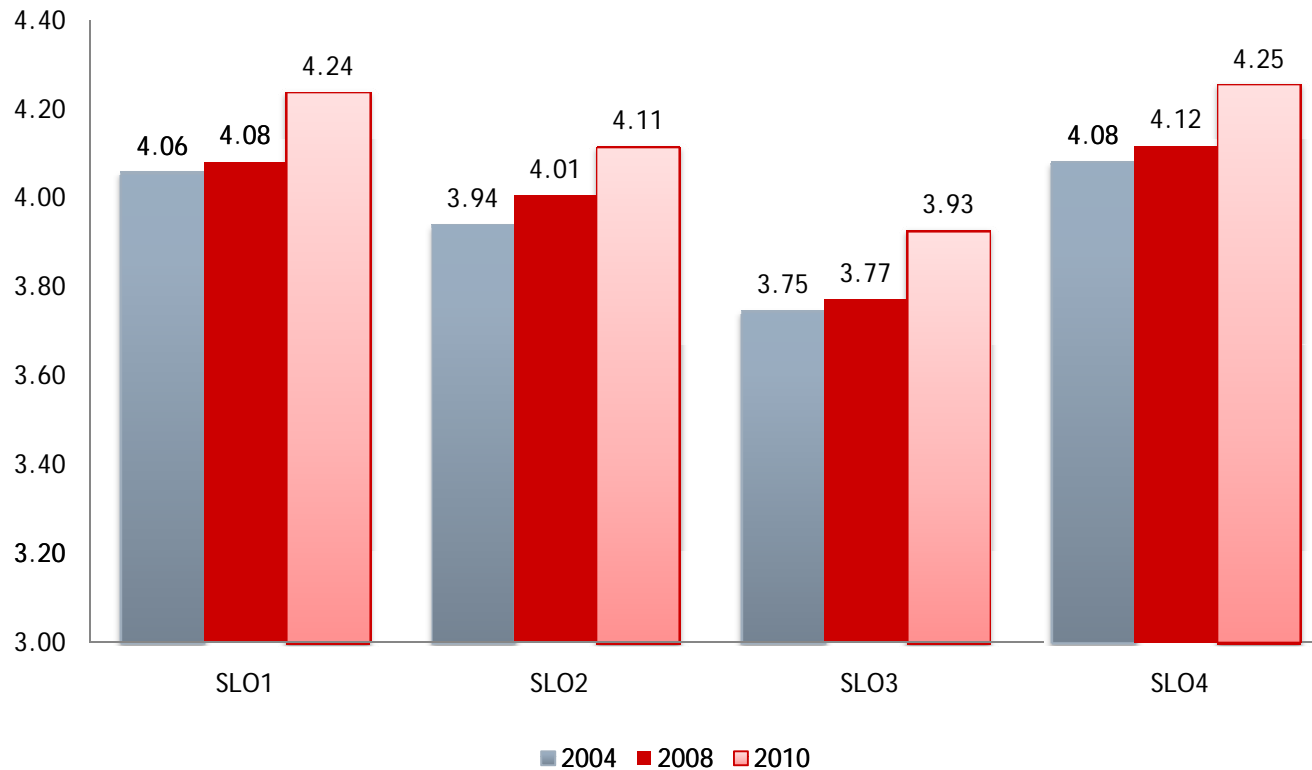
# FCC Institutional SLOs

## - importance & progress of SLOs

- ❑ SLO 1 - Communication (7 items)
- ❑ SLO 2 - Critical thinking and information competency (11 items)
- ❑ SLO 3 - Community and global awareness and responsibility (5 items)
- ❑ SLO 4 - Personal, academic, and career development (11 items)



# IMPORTANCE OF FCC SLOs

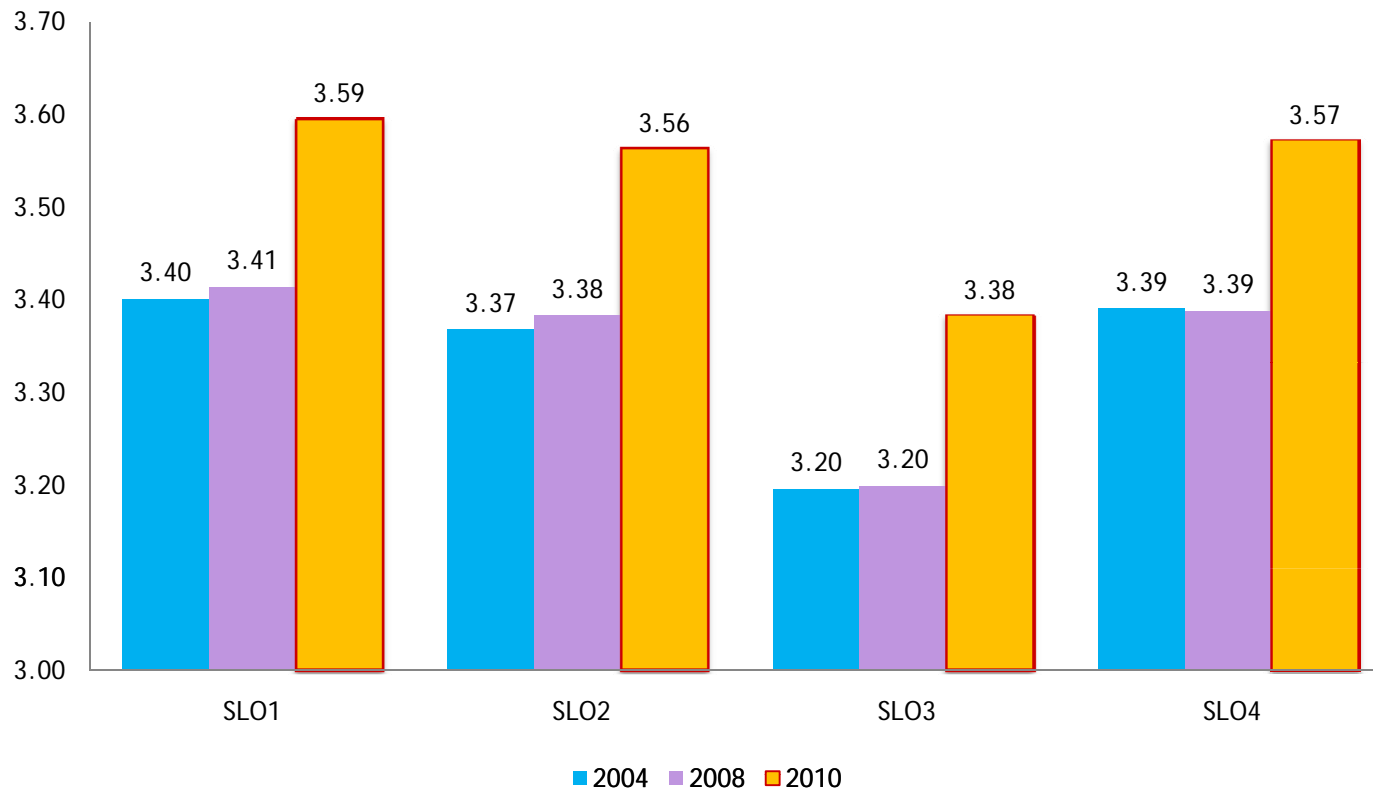


Rating scale: from 1-lowest to 5-highest



Fresno City College  
*California's Premier Community College*

# PROGRESS TOWARD FCC SLOs



Rating scale: from 1-lowest to 5-highest



Fresno City College  
*California's Premier Community College*

# FCC Institutional SLOs - personal growth

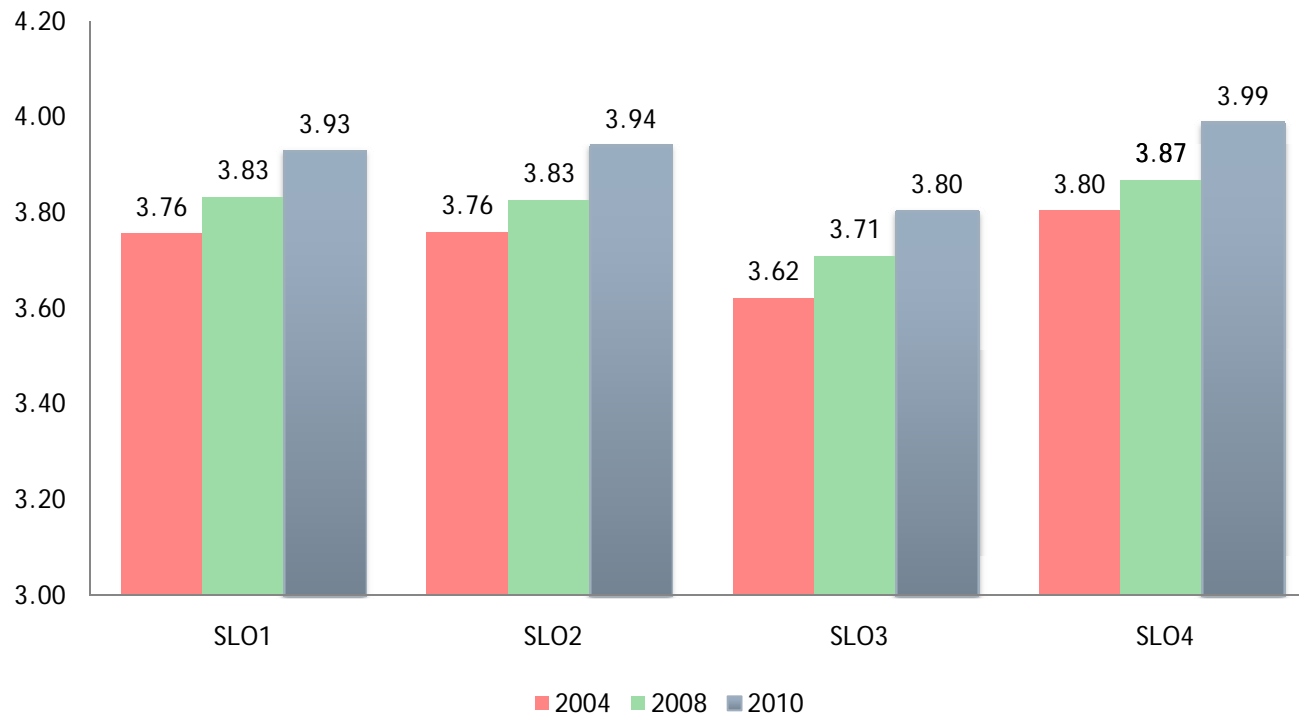
- ❑ SLO 1 - Communication (9 items)
- ❑ SLO 2 - Critical thinking and information competency (14 items)
- ❑ SLO 3 - Community and Global Awareness and Responsibility (22 items)
- ❑ SLO 4 - Personal, academic, and career development (22 items)





Fresno City College  
*California's Premier Community College*

# PERSONAL GROWTH - SLOs

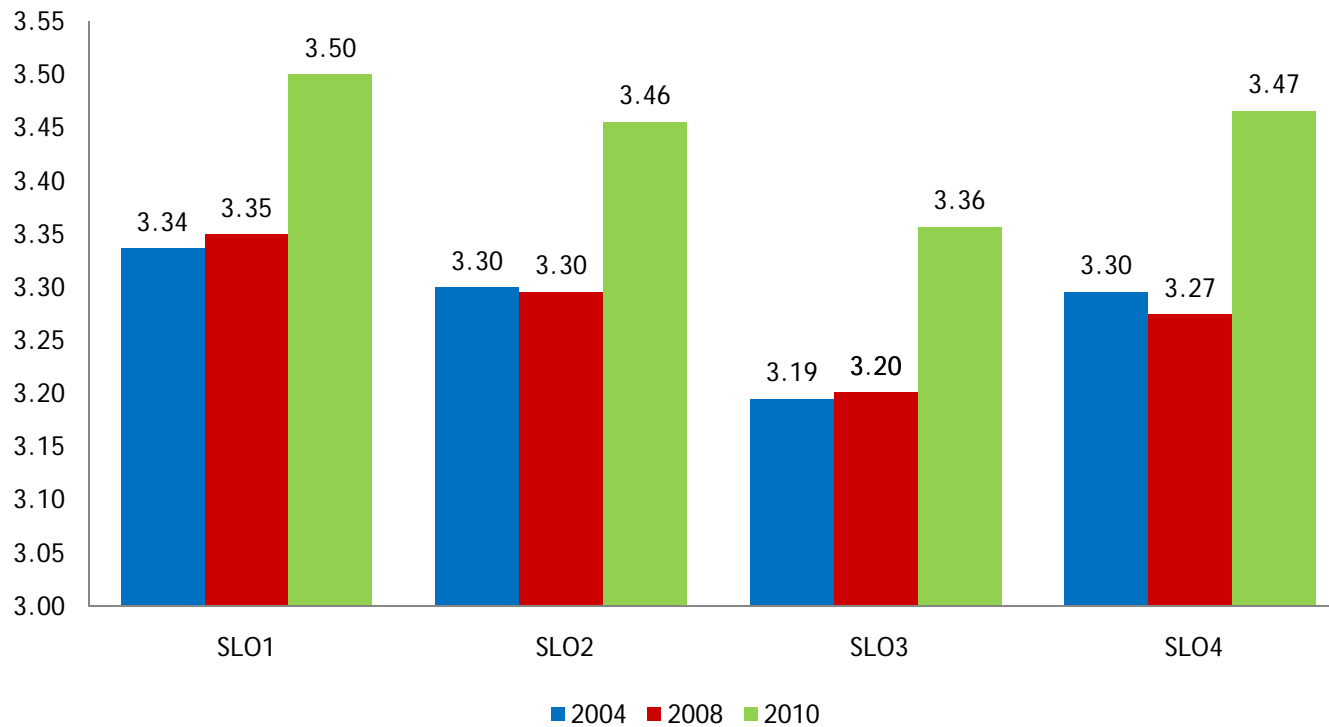


Rating scale: from 1-lowest to 5-highest



Fresno City College  
*California's Premier Community College*

# FCC CONTRIBUTION TO SLOs



Rating scale: from 1-lowest to 5-highest



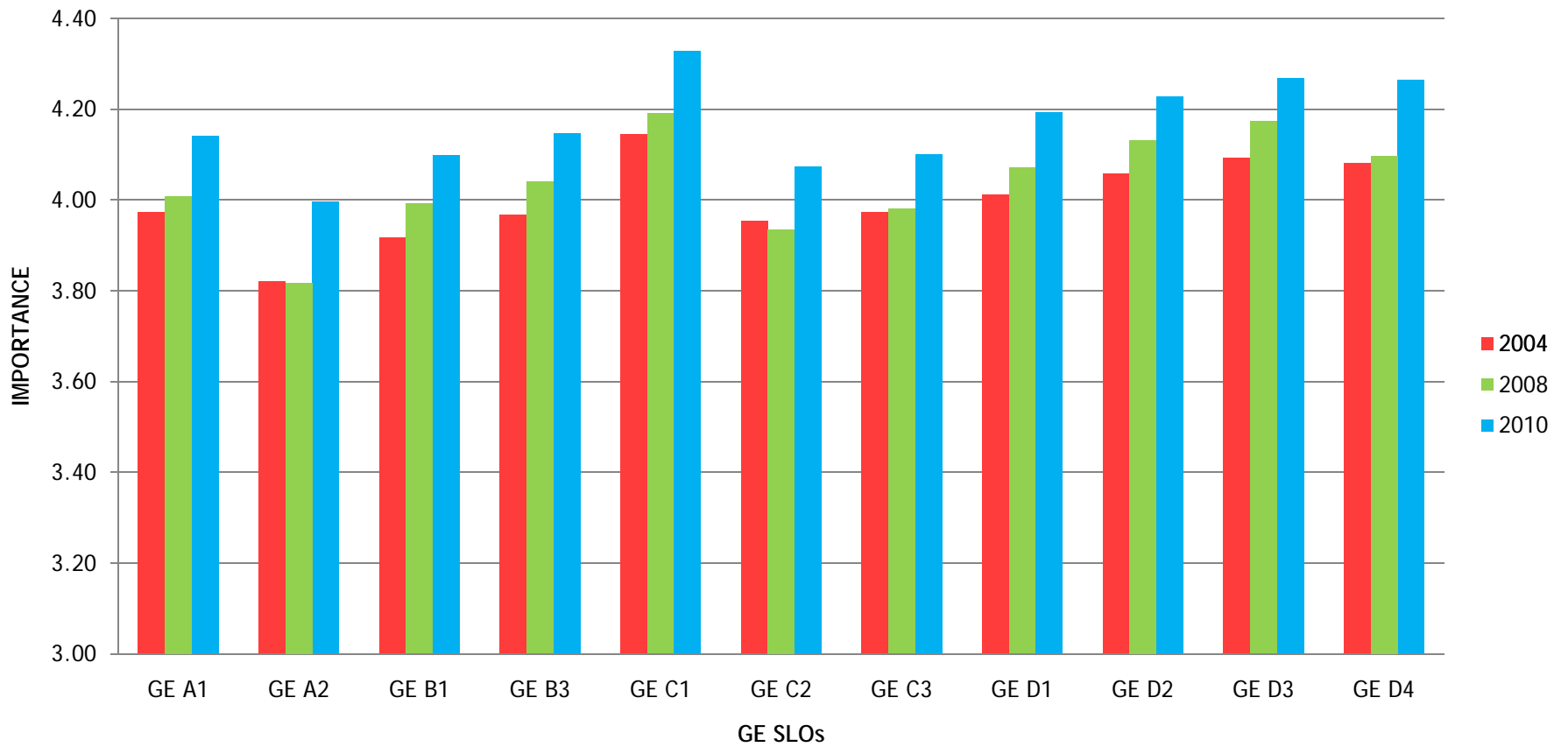
Fresno City College  
*California's Premier Community College*

## FCC GE SLOs (12 outcomes)

- Area A - Natural Sciences (2 outcomes)
- Area B - Social and Behavioral Sciences (3 outcomes)
- Area C - Humanities (3 outcomes)
- Area D - Language and Rationality (4 outcomes)



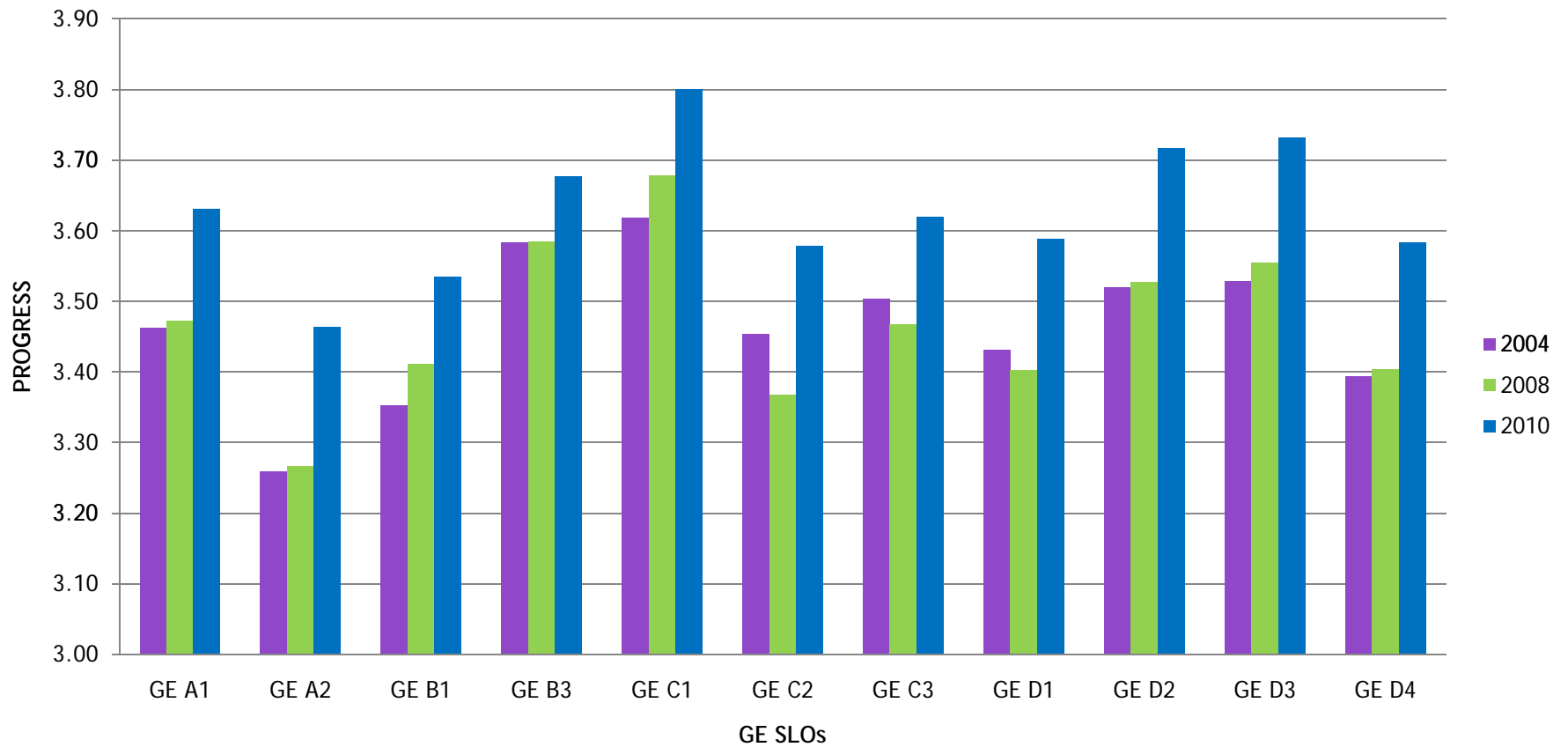
# GE SLOs - importance



A - Natural Sci., B - Social and Behavioral Sci., C-Humanities, D-Language and Rationality



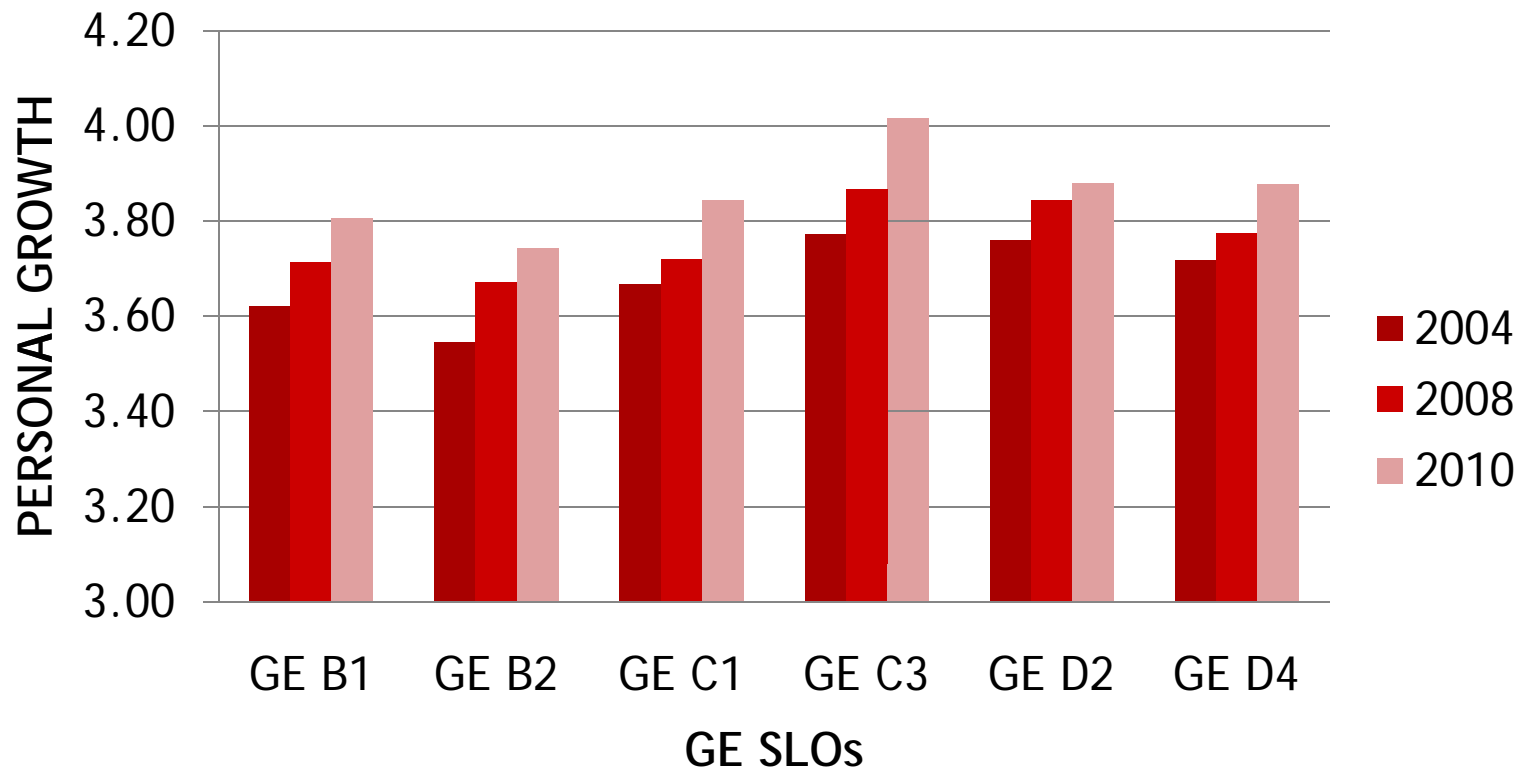
# GE SLOs - progress



A - Natural Sci., B - Social and Behavioral Sci., C-Humanities, D-Language and Rationality



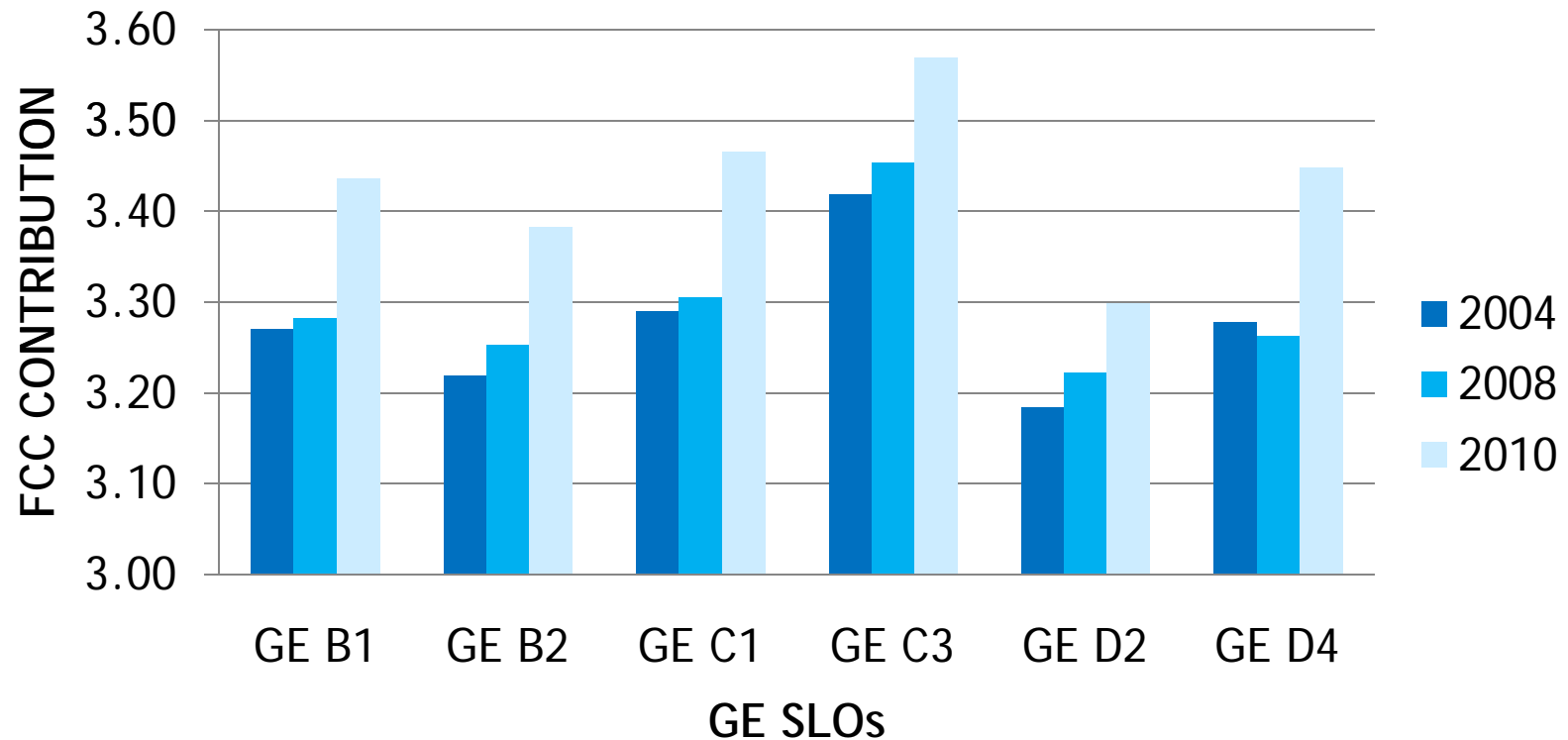
## GE SLOs - personal growth



A - Natural Sci., B - Social and Behavioral Sci., C-Humanities, D-Language and Rationality



## GE SLOs - FCC contribution



A - Natural Sci., B - Social and Behavioral Sci., C-Humanities, D-Language and Rationality



Fresno City College  
*California's Premier Community College*

## CONCLUSIONS

- For the past 6 years, students rated increasingly higher on the importance of FCC four institutional SLOs.
- Students reported that they made more progress on achieving FCC SLOs especially in 2010.
- Students reported greater personal growth on four FCC institutional SLOs in the past 6 years.
- When compared with previous survey data, students reported that FCC contributed much more to their personal growth in all four areas of FCC SLOs in 2010.





Fresno City College

*California's Premier Community College*

## CONCLUSIONS

- There was a consistent increase in student perceived importance and progress on 11 GE outcomes for last 6 years.
- Students reported more personal growth and more FCC contribution on 6 GE outcomes.